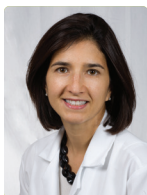


# Applying for Our Residency



## Application Deadline: January 2, 2024

Applicants must submit through PhORCAS a personal statement, pharmacy transcripts, three letters of recommendation and a curriculum vitae. An interview is required. Please contact one of us if you are interested in the program or have any questions regarding the residency.



### **Laura Veltri Hamann, PharmD, BCPS**

Residency Program Director  
Dept. of Pharmacy  
Missouri Baptist Medical Center  
3015 North Ballas Road  
Saint Louis, Missouri 63131  
Phone: 314-996-5881 • Fax: 314-996-5309  
Laura.Hamann@bjc.org



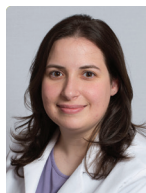
### **Sara K. Butler, PharmD, MHA, BCPS, BCOP**

Regional Director, Community Hospital  
Pharmacy Services  
Dept. of Pharmacy  
Missouri Baptist Medical Center  
3015 North Ballas Road  
Saint Louis, Missouri 63131  
Phone: 314-996-5125 • Fax: 314-996-6947  
Sara.Butler@bjc.org



### **Anastasia Armbruster, PharmD, FACC, BCPS, BCCP**

Residency Coordinator  
Dept. of Pharmacy  
Missouri Baptist Medical Center  
3015 North Ballas Road  
Saint Louis, Missouri 63131  
Phone: 314-996-7868  
Anastasia.Armbruster@bjc.org



### **Naomi Barasch, PharmD, MHA, BCPS**

Clinical Pharmacy Manager  
Dept. of Pharmacy  
Missouri Baptist Medical Center  
3015 North Ballas Road  
Saint Louis, Missouri 63131  
Phone: 314-996-5044  
Naomi.Barasch@bjc.org

**Missouri Baptist Medical Center**



# *Resident Salary and Benefits*

## **Salary**

\$50,000

## **Health and Dental Insurance**

Residents are eligible for enrollment in group health insurance. Coverage starts after the first 30 days of employment.

## **Life Insurance**

The hospital provides term life insurance at one times the annual salary at no cost to the resident.

## **Educational Leave**

A maximum of seven days will be authorized for travel to meetings.

## **Paid Time Off**

A total of 23 days paid time off (PTO) is provided. (Paid Time Off or PTO) is provided. These days are used for holidays, vacation days, and the first three days of any extended episode of illness.

## **Holidays**

The six annual holidays are New Year's Day, Memorial Day, Independence Day, Labor Day, Thanksgiving and Christmas Day. The resident will be scheduled to one major and one minor holiday.

## **Support Services**

Residents have privileges at the medical library. Office space, copying privileges, and access to personal computers and the Internet are available. Free parking also is provided.

## **Licensure**

Residents must be licensed by the Missouri Board of Pharmacy.

# Resident Activities

**R**esidents participate in a wide variety of educational and service activities throughout the year.

## Resident Research

The resident is responsible for conceiving, designing and conducting a research project during the year. The project will be completed under the guidance of one of the residency preceptors. Opportunities to present completed research at local, state or national conferences as available.

## Pharmacy Presentations

Residents will present and discuss current articles of interest at two journal clubs and two formal case presentations.

## Resident Education Academy

Resident will participate in a series of longitudinal workshops designed to introduce principles of abilities-based education (ABE) and offer practice opportunities in preparing teaching materials and teach an elective course. Upon successful completion, residents will receive a teaching certificate from St. Louis College of Pharmacy at UHSP.

## Resident Seminar

The resident will present a formal seminar to St. Louis metropolitan area pharmacists. Assistance and guidelines for seminar presentation will be provided.

## Conferences

A variety of conferences are available at Missouri Baptist Medical Center. These include medicine Grand Rounds and numerous specialty conferences.



## Service Commitment

The resident will provide staffing to the department by working two three-hour evening shifts a week along with one eight-hour weekend clinical pharmacy shift every fourth week.

## Advanced Cardiac Life Support

Residents will complete advanced cardiac life support (ACLS) and should have current basic life support (BLS) certification prior to taking ACLS.



# Resident Learning Sites

## Cardiovascular Recovery

Patients cared for in this unit include those who have received coronary bypass surgery, heart valve replacements and aneurysm repair. Under the guidance of the preceptor, the resident will provide pharmaceutical care to the patients and drug information to the team.

## Cardiology

The resident will round with the Washington University School of Medicine Advanced Heart Failure team. Under the guidance of a preceptor, the resident will provide care for patients with complex cardiac disease states such as acute coronary syndromes, heart failure, and atrial and ventricular arrhythmias. The resident will also assist in precepting PharmD students.

## Infectious Diseases

The resident will attend rounds with an infectious disease physician as well and participate in antimicrobial stewardship activities. Under the guidance of the preceptor, the resident will provide care for patients with a variety of bacterial, viral, and fungal infections. The resident will assist in precepting PharmD students.

## Surgical and Medical Intensive Care Units

The intensive care units consists of three units with a total of 30 beds. The resident will attend rounds in the intensive care units. Under the guidance of the preceptor, the resident will provide pharmaceutical care to the patients and drug information to the team. Knowledge of pharmacotherapy in critical care and interpretation of invasive hemodynamic monitoring data will be emphasized.

## Internal Medicine

The resident will work with a multidisciplinary, interprofessional team to optimize disease state management and improve transitions of care. Under the guidance of a preceptor, the resident will provide care for patients with a wide variety of general medicine disease states, with an additional focus on neurology and/or medical oncology. The resident will also assist in precepting PharmD students.



## Emergency Medicine

The emergency department consists of a 26-bed unit. Residents will participate in direct patient care on a daily basis in conjunction with emergency medicine physicians and nurses. Under the guidance of the preceptor, they will assist in medication history documentation, admission order review and pharmaceutical care. In this dynamic setting, residents will develop skills to rapidly review charts, interview and counsel patients, assist in medical emergencies and provide empiric treatment recommendations as well as drug information for a broad range of disease states.

## Nephrology

The resident will participate in patient rounds with a nephrologist and preceptor. Topic discussions will include chronic renal failure, acute renal failure, as well as other renal-related disorders.

## Longitudinal Heart Failure Clinic

The resident will participate in a weekly longitudinal ambulatory care experience focused in advanced heart failure. The resident will collaborate with physicians and a nurse practitioner to optimize guideline-directed medication therapy. The resident will also assist in precepting PharmD students.

## Missouri Baptist Medical Center



# About the Residency Program

**M**issouri Baptist Medical Center, a 489-bed tertiary care community hospital in the heart of St. Louis County, and a member of the nationally renowned BJC HealthCare system, is offering an extraordinary opportunity in a pharmacy practice residency accredited by the American Society of Health-System Pharmacists.

The program provides a unique residency experience at a hospital that has developed a national reputation for its commitment to quality care, safety and excellence. Missouri Baptist was ranked the second leading hospital for Missouri and the metro St. Louis area by *U.S. News & World Report* in 2023.

The pharmacy department provides an extensive spectrum of clinical services, including interdisciplinary patient rounds, nutritional support team, pharmacokinetics, drug information, investigational drug service and involvement in multiple performance improvement committees.



The pharmacy department also utilizes a state-of-the-art medical informatics system that alerts pharmacists regarding medication management.

The department has 40 full-time equivalent (FTE) pharmacists, 31 FTE technicians, four satellite pharmacies, including an oncology/infusion center, and operating room satellites.

## BJC HealthCare *Diversity, Equity, and Inclusion*

### Our Aspiration

BJC will be a national health care leader where diversity, equity, and inclusion are embedded in our Values, honored in our daily practices, and experienced by everyone we serve.

### Our Purpose

(referring to the Office of Diversity, Equity, and Inclusion)

BJC Diversity, Equity, and Inclusion (DEI) furthers the our mission by advancing our culture, policies, and clinical and business practices through leveraging diversity, ensuring equity, and establishing belonging for everyone we serve.

Missouri Baptist Medical Center has a robust DEI committee (Bridges) that educates team members on bias and provides



opportunities for belonging. This committee is open to all who would like to participate in furthering an inclusive workplace culture.

**Missouri Baptist Medical Center**



# Resident Profiles



**Gabrielle Hahn**

PGY-1 Pharmacy Practice Resident, 2023-2024  
Pharm.D., UHSP St. Louis College of Pharmacy  
[Gabrielle.Hahn@bjc.org](mailto:Gabrielle.Hahn@bjc.org)

Matching at Missouri Baptist Medical Center for my residency was a truly exciting moment in my pharmacy journey. After completing several student rotations here and speaking with the past residents and preceptors at midyear, I was confident that this program would provide me with the opportunities and support needed to grow into a successful clinical pharmacist. Although I was excited, I was also nervous to start this adventure, but I was welcomed with open arms and smoothly transitioned into my new role as a pharmacist.

At Missouri Baptist Medical Center, residents get exposure to a diverse patient population while building close interprofessional relationships with other members of the healthcare team, where pharmacy input is respected. The residency program stands out by offering a multitude of rotation options. This includes everything from critical care to ambulatory medicine, providing a comprehensive clinical education. The preceptors are kind, approachable, and eager to help foster individual growth. Additionally, the program places significant emphasis on longitudinal opportunities, allowing residents to engage in research, be a part of committees, and be involved with teaching students. With these opportunities, residents are given the chance to learn, grow, and thrive both personally and professionally.

When considering a residency program, I recommend finding an environment conducive to your individual development, and Missouri Baptist offers just that. The residency process can be a frightening journey, but it comes with great rewards. If you have any questions about the program or the residency process in general, feel free to reach out to me via email or phone at [gabrielle.hahn@bjc.org](mailto:gabrielle.hahn@bjc.org) or 314-393-8456.



**Nicole Gasparovic**

PGY-1 Pharmacy Practice Resident, 2023-2024  
Pharm.D., UHSP St. Louis College of Pharmacy  
[Nicole.Gasparovic@bjc.org](mailto:Nicole.Gasparovic@bjc.org)

I woke up early on match day and anxiously waited for my match email. When I finally received the email and read that I matched for a PGY-1 residency at Missouri Baptist Medical Center, I felt very grateful and eager to start. Being from the St. Louis area, I had heard great things about the residency program at Missouri Baptist Medical Center for years. Through the midyear and interview process, I was able to talk to the residents and preceptors and really get a feel for what the program is like. The conversations we had made me feel like this is a place I could be both challenged and supported during residency.

The residency program at Missouri Baptist Medical Center is well rounded with opportunities to tailor your experience, precept students, and complete a teaching certificate program. Longitudinal components of the program include working on research projects, serving on committees, and working in the Heart Failure Clinic. My favorite part about the program is the preceptors I get to work with. Each day I come to work I am impressed by them and excited to learn from them. I came into my first year of residency unsure of what my next step will be after this year, but I feel confident that these experiences and these preceptors are going to set me up for success for whatever I decide.

Researching residency programs can be both exciting and overwhelming. I highly encourage you to consider Missouri Baptist Medical Center for residency. I feel like I ended up exactly where I'm supposed to be for residency, and I wish that for all the upcoming residency applicants. Please feel free to reach out to me with any questions about the residency program via email at [nicole.gasparovic@bjc.org](mailto:nicole.gasparovic@bjc.org) or phone 314-280-1929.



# Clinical Staff and Faculty



## **Sara K. Butler, PharmD, MHA, BCPS, BCOP**

Director, Departments of Pharmacy  
PharmD: University of North Carolina-Chapel Hill  
PGY1: Duke University Hospital, Durham, NC  
PGY2: Oncology Pharmacy Residency:  
Duke University Hospital, Durham, NC



## **Yvonne J Burnett, PharmD, BCIDP**

Clinical Pharmacist Specialist  
PharmD: University of Rhode Island  
PGY1: Atlantic Health System, Morristown, NJ  
PGY2: Infectious Diseases Pharmacy Residency:  
South Texas Veterans Health Care System  
San Antonio, TX



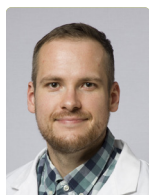
## **Anastasia Armbruster, PharmD, FACC, BCPS, BCCP**

Clinical Pharmacist Specialist  
PharmD: St. Louis College of Pharmacy  
PGY1: West Virginia University Hospitals,  
Morgantown, WV  
PGY2: Internal Medicine Pharmacy Residency:  
VA St. Louis Health Care System, St. Louis, MO



## **Laura Veltri Hamann, PharmD, BCPS**

Clinical Pharmacist Specialist  
Residency Program Director  
PharmD: Creighton University  
PGY1: Barnes-Jewish Hospital, St. Louis, MO



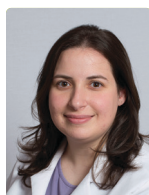
## **Shane Austin, PharmD, BCPS**

Clinical Pharmacist Specialist  
PharmD: St. Louis College of Pharmacy  
PGY1: SSM Health St. Mary's Hospital, St. Louis, MO  
PGY2: Internal Medicine Pharmacy Residency:  
VA St. Louis Health Care System, St. Louis, MO



## **Meredith Keller, PharmD**

Clinical Pharmacist  
PharmD: University of Missouri Kansas City  
PGY1: Missouri Baptist Medical Center, St.  
Louis, MO



## **Naomi Barasch, PharmD, MHA, BCPS**

Clinical Pharmacy Manager  
PharmD: Drake University  
PGY1: Missouri Baptist Medical Center  
St. Louis, MO



## **Katherine Peppin, PharmD, BCPS**

Clinical Pharmacist  
PharmD: Creighton University  
PGY1 Residency: Missouri Baptist Medical  
Center St. Louis, MO



## **Amanda R. Buckallew, PharmD, BCPS**

Clinical Pharmacist Specialist /  
Clinical Specialist Pharmacist Supervisor  
PharmD: University of Missouri Kansas City  
PGY1: Missouri Baptist Medical Center  
St. Louis, MO



## **Sara Richter, PharmD, BCPS**

Clinical Pharmacist Specialist  
PharmD: St. Louis College of Pharmacy  
PGY1: Mercy Hospital St. Louis, St. Louis, MO  
PGY2 Internal Medicine Pharmacy Residency: VA  
St. Louis Health Care System, St. Louis, MO



## **Emily Stephens, PharmD**

Clinical Pharmacist Specialist  
PharmD: SIUE School of Pharmacy  
PGY1: Missouri Baptist Medical Center,  
St. Louis, MO

# Missouri Baptist “Points of Pride”



- A comprehensive and nationally recognized cardiology program, the Heart Center at MoBap is staffed by a team of top cardiologists in St. Louis, treating a variety of heart conditions. Our exceptional cardiac surgery program continually ranks among the best in the nation, and our use of the most advanced technologies have made us leaders in both the region and throughout the country. While our center is recognized for its expertise and high volume, we bring a focused approach to every patient, leveraging our in-depth knowledge to treat the patient, not the condition.
- The medical and radiation oncologists, nurses, social workers and clinical professionals in the Missouri Baptist Cancer Center provide screening and early detection, diagnosis, intervention and rehabilitation for oncology and hematology patients.
- The Digestive Disease Center offers a full range of diagnostic and interventional endoscopy services for inpatients and outpatients experiencing gastrointestinal or pulmonary disease.
- The Ortho/Neuro/Spine Program provides education, physical therapy, rehabilitation, drug therapies and surgical intervention programs designed to meet the needs of its orthopedic patients.

- The Clinical Nursing Institute at Missouri Baptist has been a valued resource helping to develop expert, compassionate nurses who are passionate about service excellence at Missouri Baptist. Thousands of nurses and other healthcare professionals have participated in courses, workshops or seminars offered at the CNI.
- Missouri Baptist Medical Center provides health fairs, screenings and educational programs, which offer wellness and prevention tips to the St. Louis community.
- Numerous Missouri Baptist physicians and specialists have provided diagnosis and treatment for hundreds of patients in Missouri and Illinois communities whose hospitals comprise the Missouri Baptist Rural Outreach Program.



**Missouri Baptist Medical Center**





# About Missouri Baptist Medical Center



**F**rom our convenient location at the crossroads of St. Louis County, Missouri Baptist Medical Center has secured a reputation as one the top hospitals in the area. Thousands of residents from metropolitan St. Louis, Missouri and Illinois, and across the nation choose Missouri Baptist each year for the quality medical services provided here, driven by our mission to improve the health of the communities we serve.

From our humble beginnings in 1884 in the home of Dr. William Mayfield, Missouri Baptist Medical Center has grown into the existing campus located on Ballas Road near the intersection of I-270 and I-64/US 40 — a facility licensed for 489 beds, with four adjacent medical office buildings.

With more than 1,372 physicians on staff and more than 2,470 employees, Missouri Baptist provides a full spectrum of medical and surgical services, with specialization in cardiac and vascular services, oncology, ortho/neuro/spine, digestive diseases, and obstetrics.



Missouri Baptist is a member of BJC HealthCare, one of the nation's largest healthcare organizations, employing more than 30,000 individuals in greater St. Louis, southern Illinois and mid-Missouri. Through its network of 14 hospitals and other health-service organizations, BJC provides a full continuum of services. Since becoming a member of BJC in 1994, Missouri Baptist has further developed key services and witnessed phenomenal growth. In 2021, the hospital provided care for 19,954 inpatient admissions, 36,595 emergency room visits and 10,321 outpatient surgery visits.

Missouri Baptist has consistently ranked as a top Missouri hospital for cardiac surgery and cardiac care, ranked by *U.S. News & World Report* as one of the top hospitals in the region, and a member of Heartland Cancer Research, one of 40 consortia granted the prestigious Community Oncology Research Organization (NCORP) designation by the National Cancer Institute.

In 2020, Missouri Baptist Medical Center was named a Magnet® hospital by the American Nurses Credentialing Center (ANCC) for the second time.

The prestigious designation is the highest designation a healthcare organization can receive for nursing excellence and quality patient care. Only about 400 out of nearly 6,000 U.S. hospitals have achieved Magnet recognition.

## Missouri Baptist Medical Center



# Welcome to St. Louis

**W**elcome to St. Louis, home of the Gateway Arch, situated on 90 acres along the Mississippi River, and our country's smallest national park. The metropolitan area offers a wide variety of cultural and recreational opportunities. Missouri Baptist Medical Center sits at the intersection of two of the city's major highways, I-270 and I-64/US40, putting you 15-20 minutes from almost everything.

St. Louis features more than 20 institutions of higher learning, as well as libraries, museums, professional drama and opera theaters, a dance company and the second-oldest symphony orchestra in the United States.

St. Louis is home to the World Series-winning St. Louis Cardinals baseball team, the Stanley Cup-winning St. Louis Blues hockey team, and St. Louis City SC soccer team, whose stadiums are within walking distance of each other, along with several minor league teams in a variety of sports.

A more recent world-class attraction, the World Chess Hall of Fame is located in the bustling Central West End neighborhood near Forest Park, and recently hosted the international Grand Chess Tour. One of the city's major attractions is Forest Park, the site of the 1904 World's Fair. In addition to the many athletic and recreational opportunities at the park, Forest Park is home to the St. Louis Zoo, the St. Louis Science Center, the St. Louis Art Museum and the Missouri Historical Society.

## **Other attractions and events include:**

- University City's Delmar Loop including The Pageant
- Grand Center Theatre district including The Fabulous Fox Theater, The Sheldon Concert Hall, Powell Hall – home of the St. Louis Symphony, the Contemporary Art Museum of St. Louis, and Kranzberg Arts Center
- Missouri Botanical Garden
- St. Louis Art Fair
- The Great Forest Park Balloon Race
- Six Flags – St. Louis
- Grant's Farm – home of the Budweiser Clydesdales
- Great Rivers Greenway cycling/hiking trail

**Missouri Baptist Medical Center**  
**BJC HealthCare**